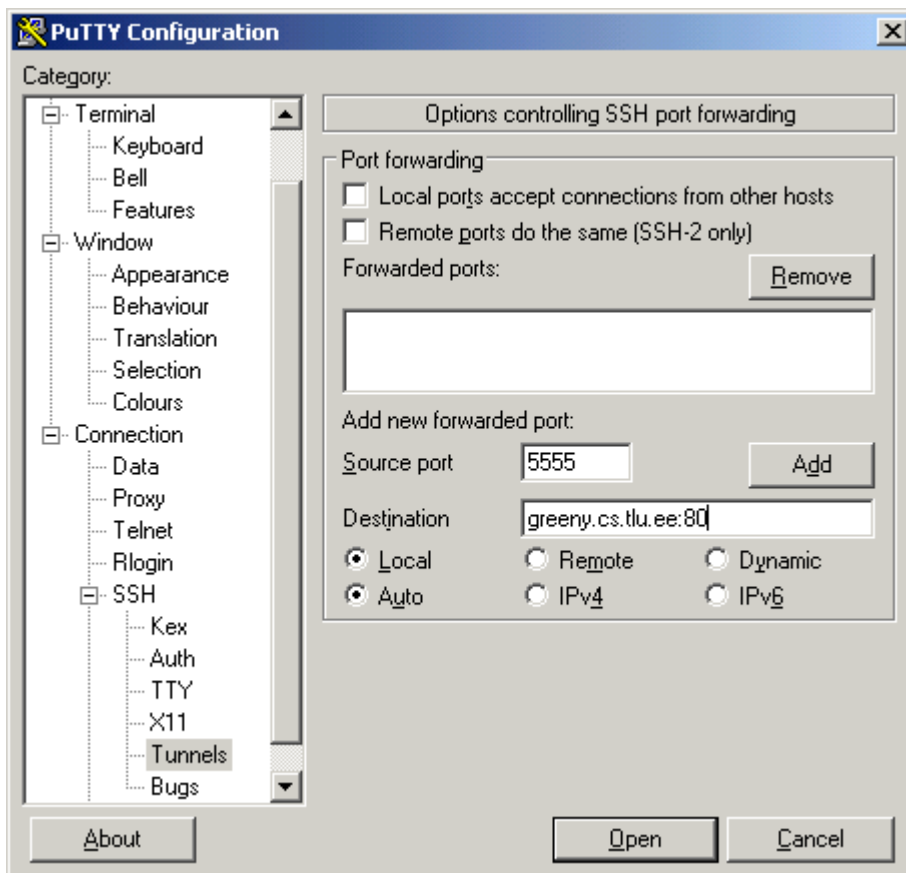
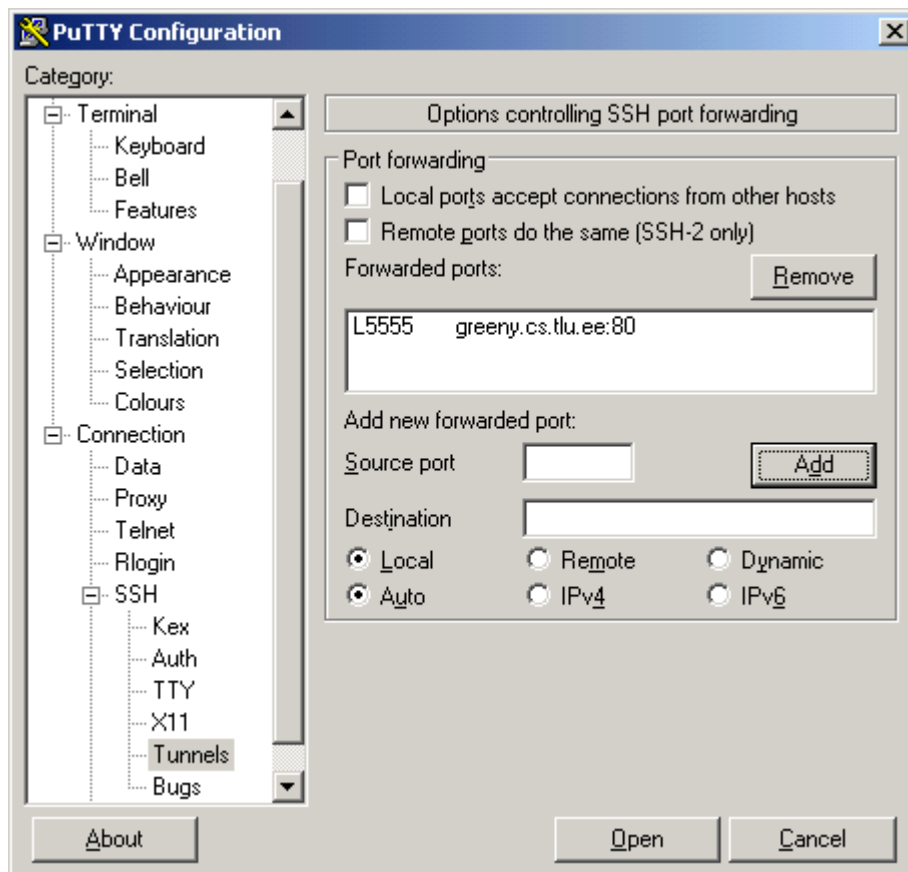


Greeny-ühendus tunneli kaudu

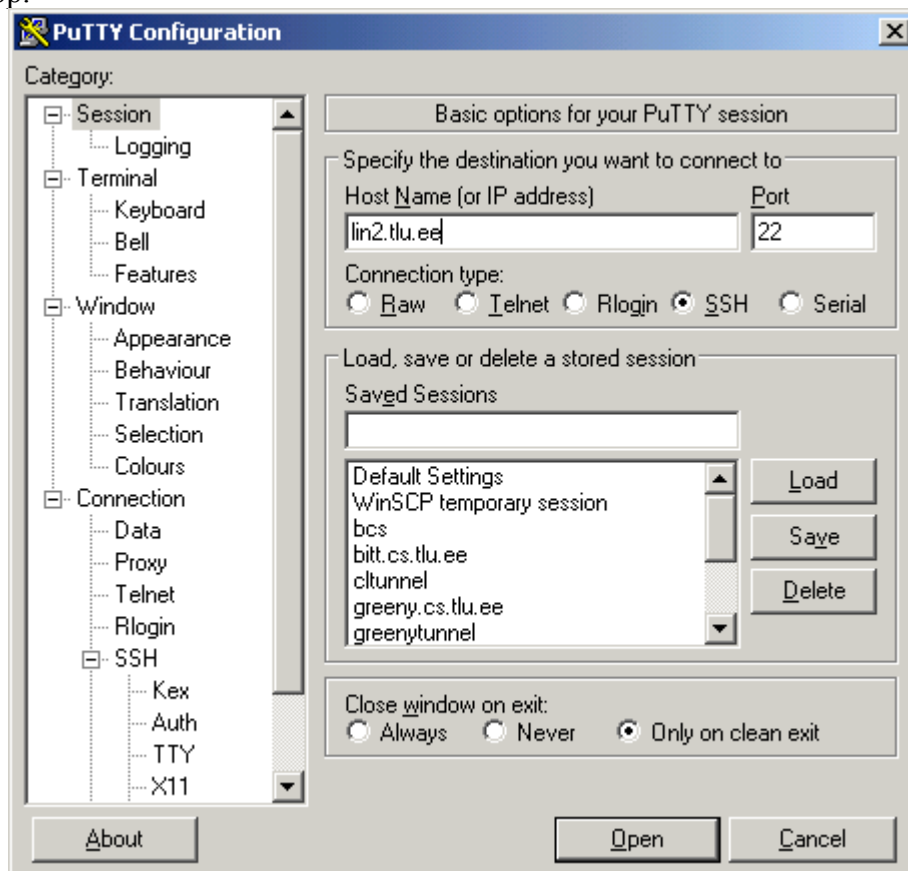
Omaduste alt ssh-tunnels



Source port- number oma masinas
destination - koht, kuhu suunatakse.



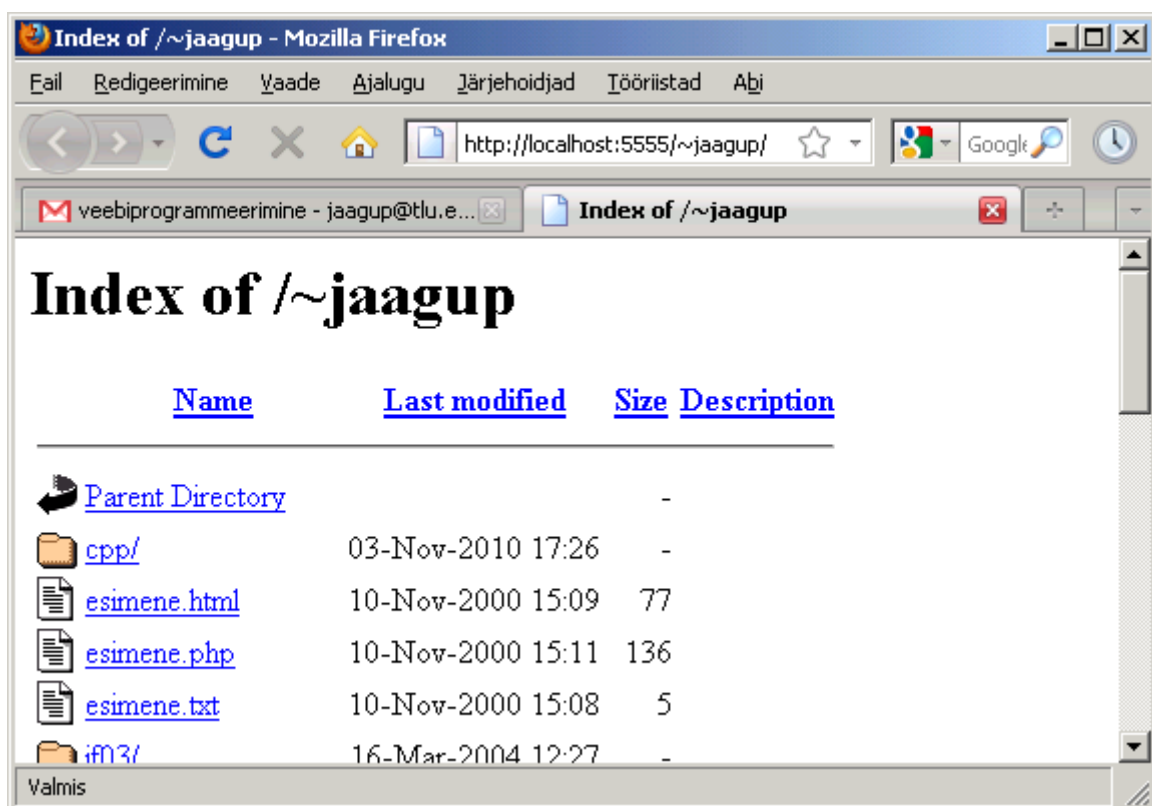
Edasi add-nupp.



Siis sessioni alt siseneme lin2.tlu.ee-sse (masina nimi tuleb kirjutada, mitte valida)

```
jaagup@lin2:~  
login as: jaagup  
jaagup@lin2.tlu.ee's password:  
Last login: Wed Nov 17 13:54:38 2010 from matsak.cs.tlu.ee  
Disk quotas for user jaagup (uid 558):  
  Filesystem blocks  quota  limit  grace  files  quota  limit  grace  
/dev/mapper/clar0-opt  
                0  102400 128000      1    10    100  
/dev/mapper/clar0-home2  
                582952 3145728 3145728      531  20000  20000  
[jaagup@lin2 ~]$
```

Oma kasutajanimi ja parool sisse



ning võibki kohaliku masina kaudu greeny-andmeid vaadata.

```
jaagup@greeny:~  
login as: jaagup  
jaagup@lin2.tlu.ee's password:  
Last login: Wed Nov 17 13:54:38 2010 from matsak.cs.tlu.ee  
Disk quotas for user jaagup (uid 558):  
  Filesystem blocks  quota  limit  grace  files  quota  limit  grace  
/dev/mapper/clar0-opt  
          0 102400 128000          1    10    100  
/dev/mapper/clar0-home2  
        582952 3145728 3145728          531 20000 20000  
[jaagup@lin2 ~]$ ssh greeny.cs.tlu.ee  
Warning: the RSA host key for 'greeny.cs.tlu.ee' differs from the key for the IP  
address '193.40.238.41'  
Offering key for IP in /home2/j/jaagup/.ssh/known_hosts:11  
Matching host key in /home2/j/jaagup/.ssh/known_hosts:15  
Are you sure you want to continue connecting (yes/no)? yes  
jaagup@greeny.cs.tlu.ee's password:  
Last login: Wed Nov 17 15:26:41 2010 from ws0.cs1.tlu.ee  
[jaagup@greeny ~]$ █
```

Edasi greenys andmete täiendamiseks tuleb ssh-ga lin2-st greenysse logida ja toimetama hakata.