

Testserverisse ühendumine.

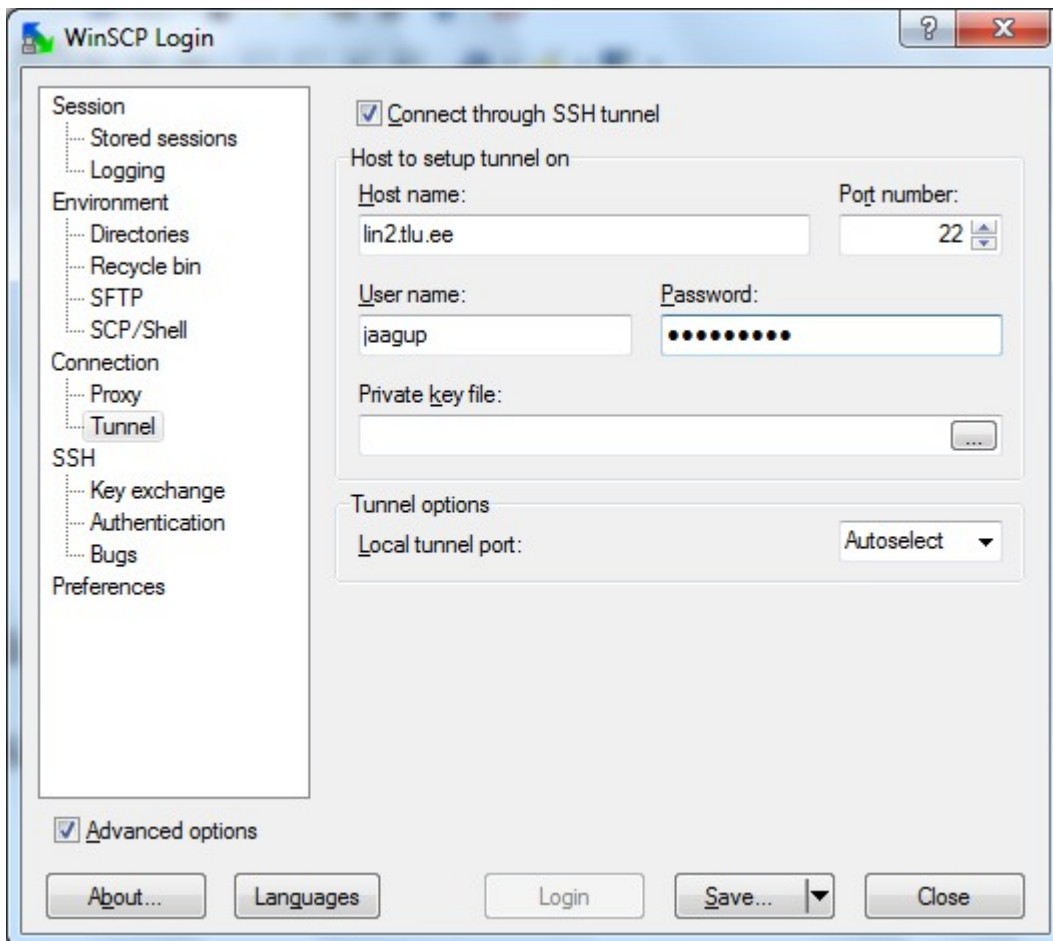
Ava WinSCP

Lülita sisse Advanced Options, vali Connections -> Tunnel

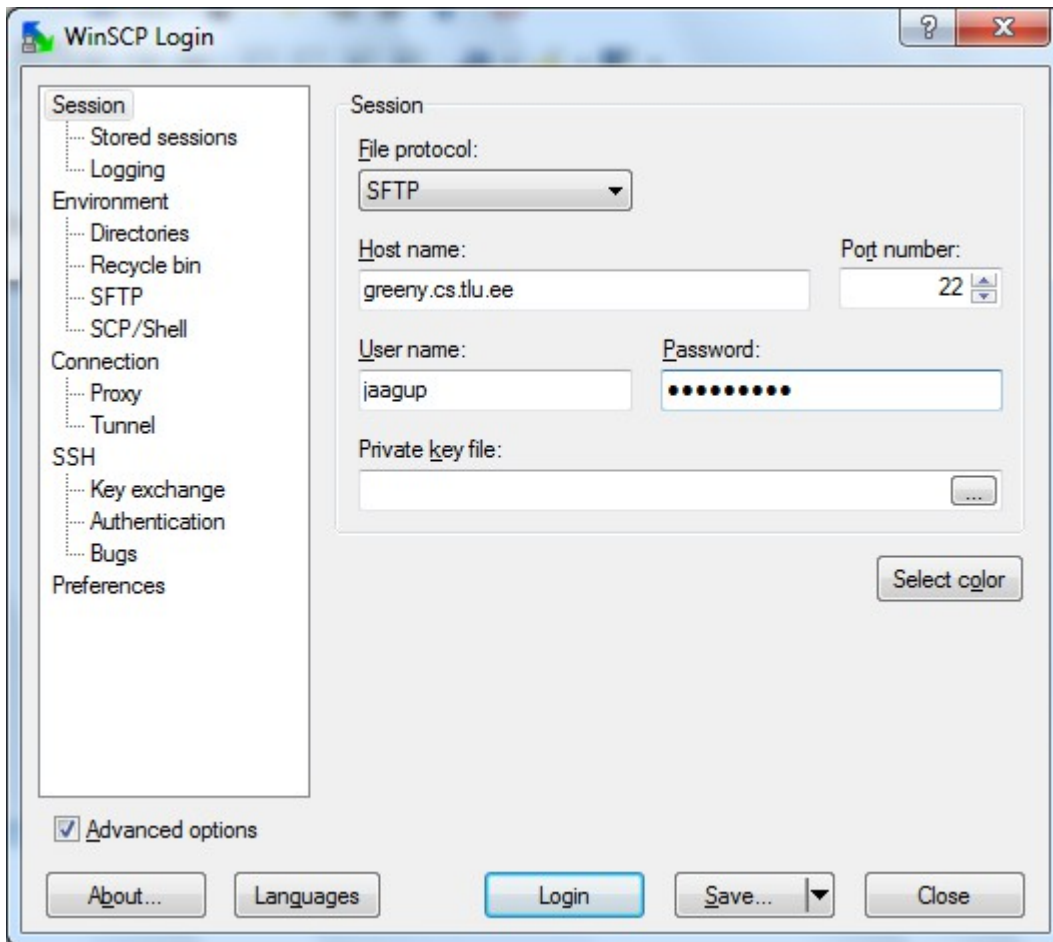
Linnuke sisse (Connect through SSH tunnel)

Host name: lin2.tlu.ee

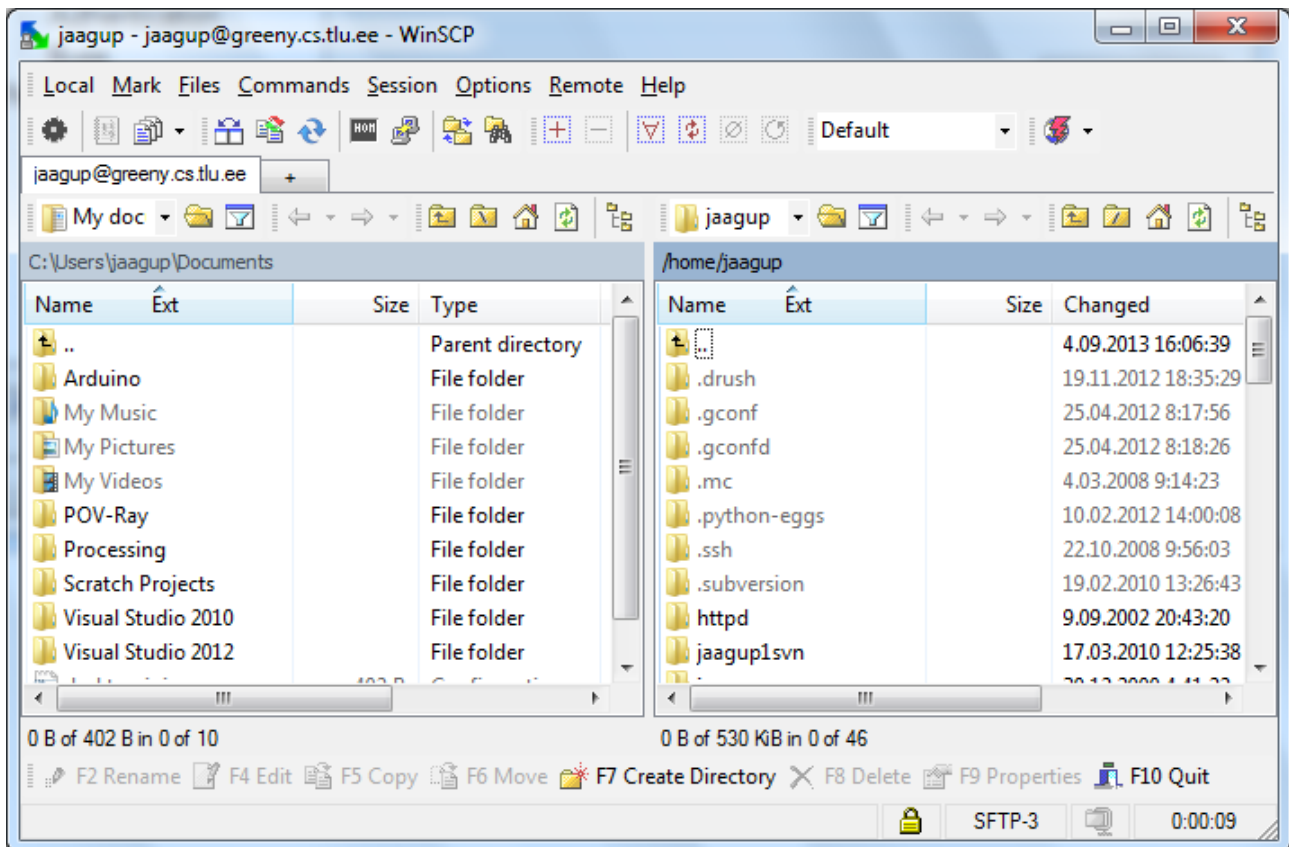
Kasutajanimi/parool – sama mis ÕISis



Edasi Session, host name greeny.cs.tlu.ee
K/P greeny testserveri omad

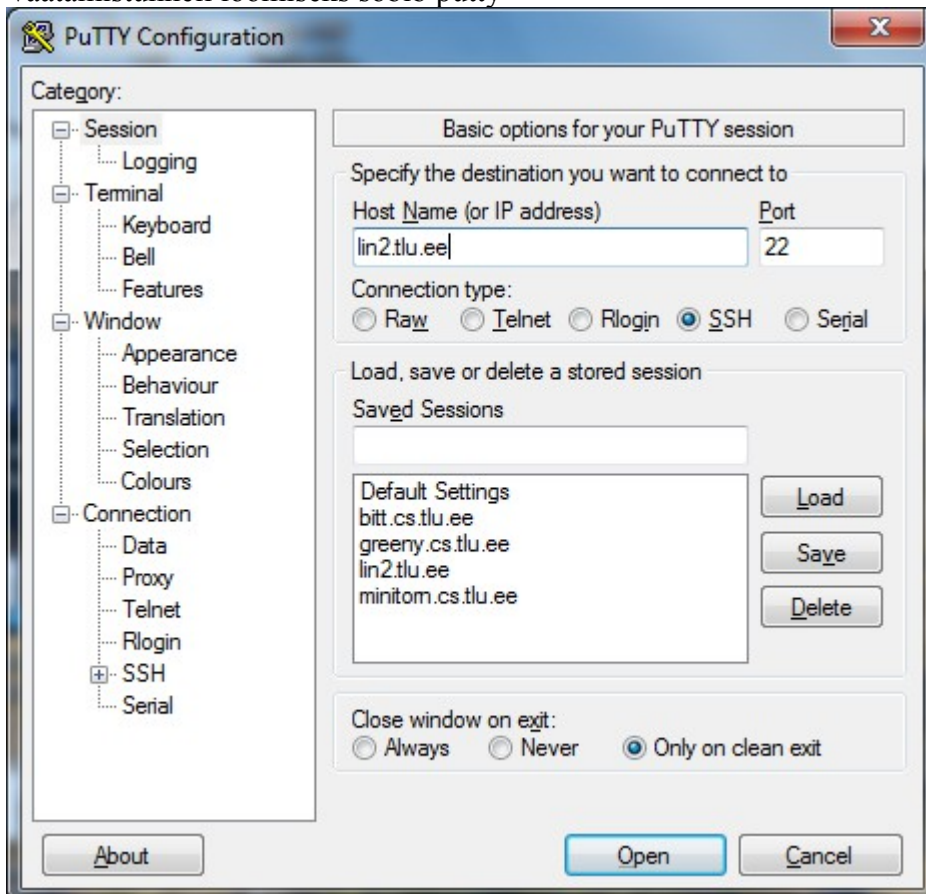


Kui hästi läheb, siis pääseb Login-nupu vajutuse peale sisse.



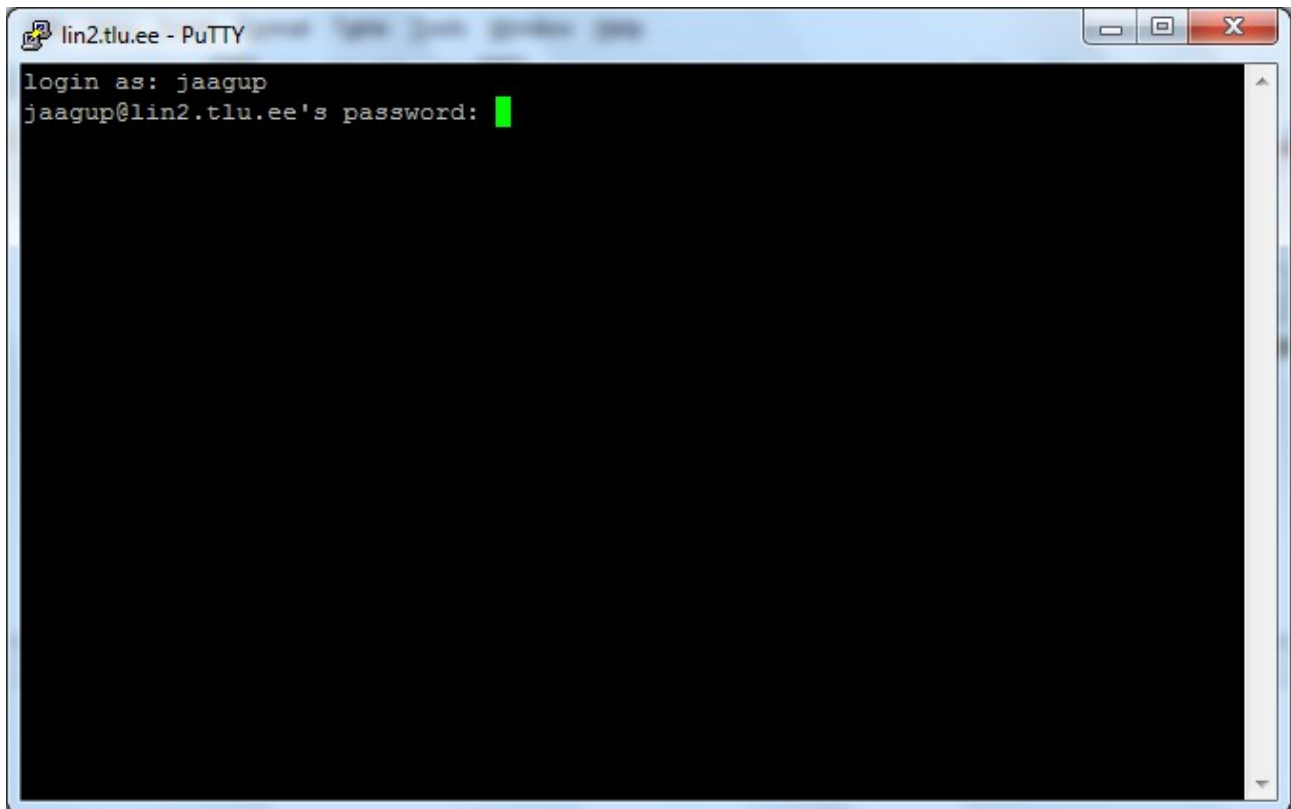
Saan failidele ligi ja neid muuta, kuid ei näe tööd veebiserveris.

Vaatamistunneli loomiseks sobib putty

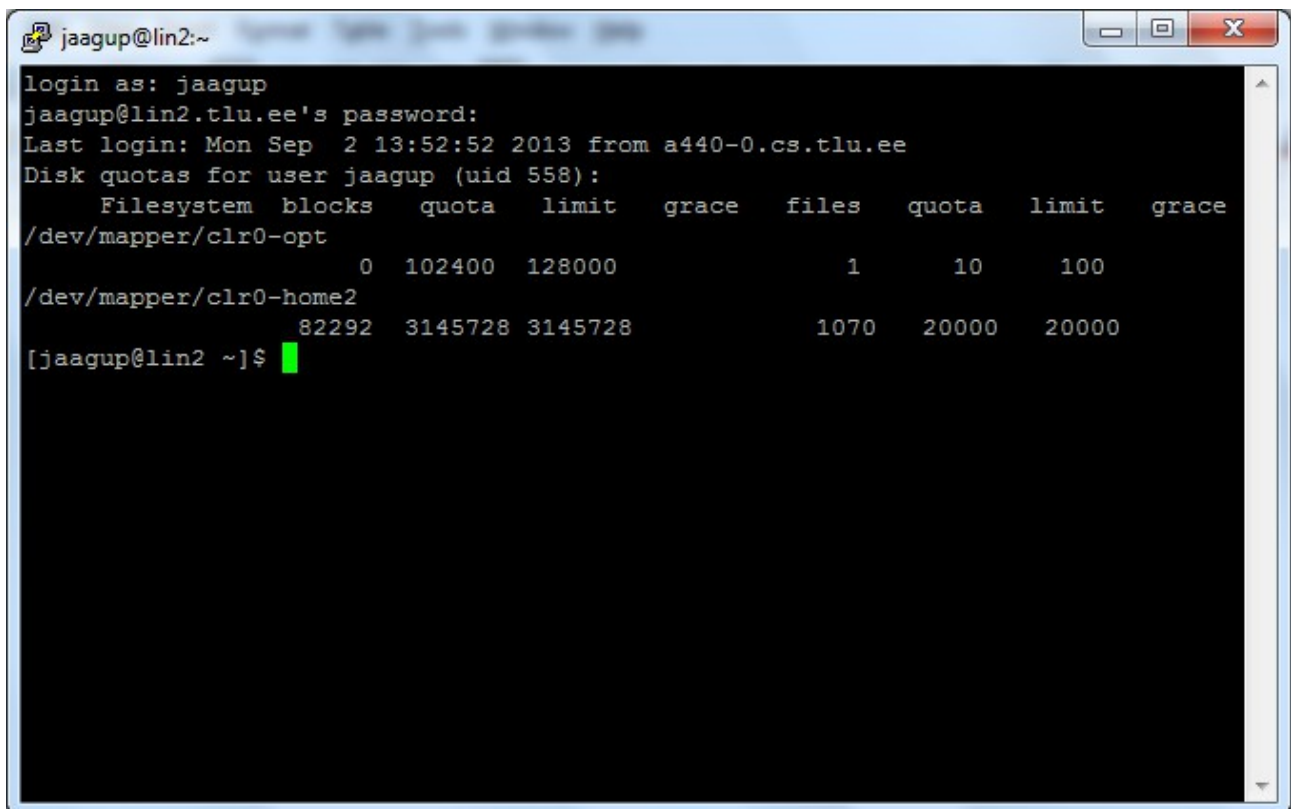


Host Name kohale lin2.tlu.ee

Sisse kirjutad ÕISI kasutajanime ja parooli. Parooli trükkimisel pole midagi näha

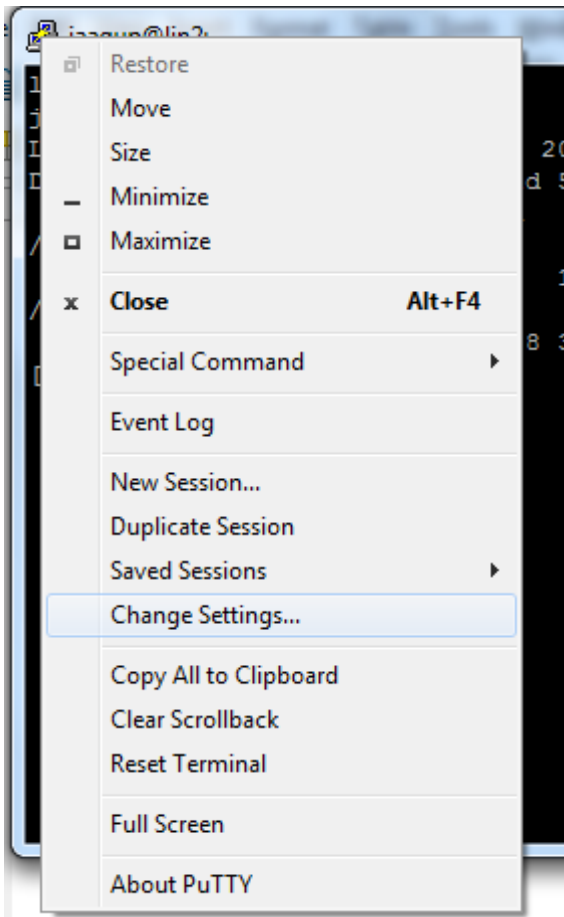


A terminal window titled "lin2.tlu.ee - PuTTY" showing the login process. The prompt is "login as: jaagup" and the user has entered "jaagup@lin2.tlu.ee's password:". A green cursor is visible at the end of the password field.

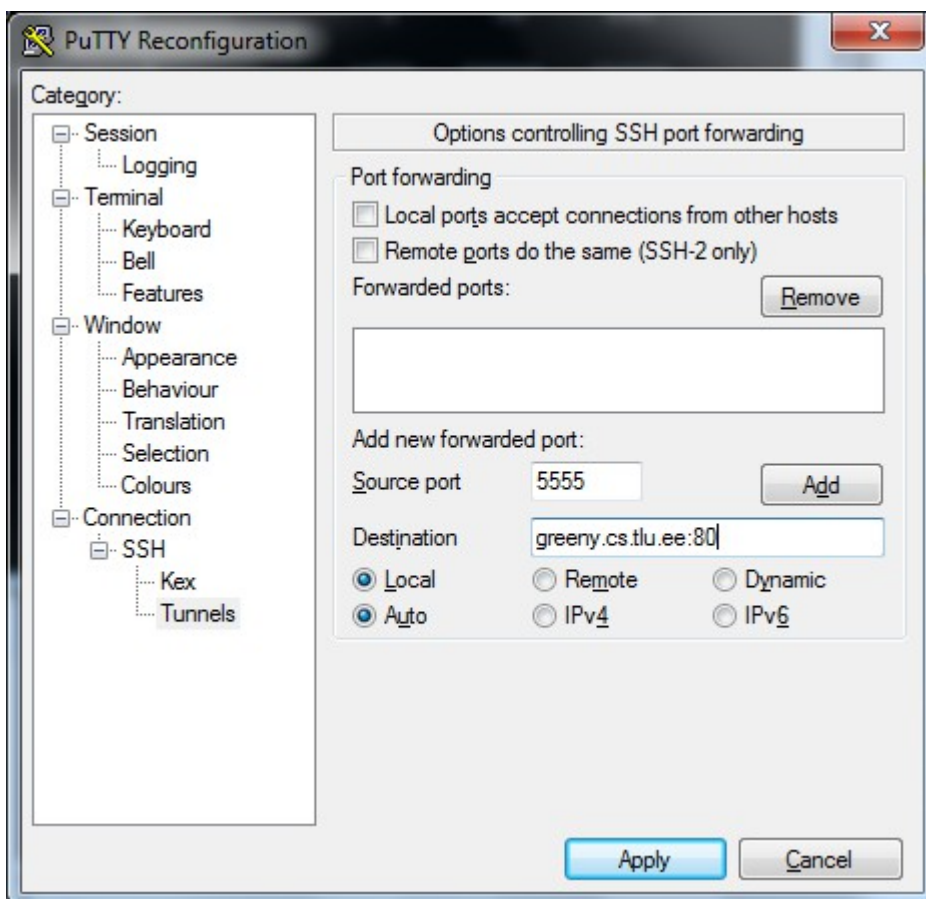


A terminal window titled "jaagup@lin2:~" showing the output of the "df" command. The prompt is "login as: jaagup" and the user has entered "jaagup@lin2.tlu.ee's password:". The output shows the last login time and disk quotas for the user jaagup (uid 558).

```
login as: jaagup
jaagup@lin2.tlu.ee's password:
Last login: Mon Sep 2 13:52:52 2013 from a440-0.cs.tlu.ee
Disk quotas for user jaagup (uid 558):
  Filesystem blocks      quota   limit   grace    files   quota   limit   grace
/dev/mapper/clr0-opt
                0  102400 128000
                1    10      100
/dev/mapper/clr0-home2
 82292 3145728 3145728
1070  20000  20000
[jaagup@lin2 ~]$
```

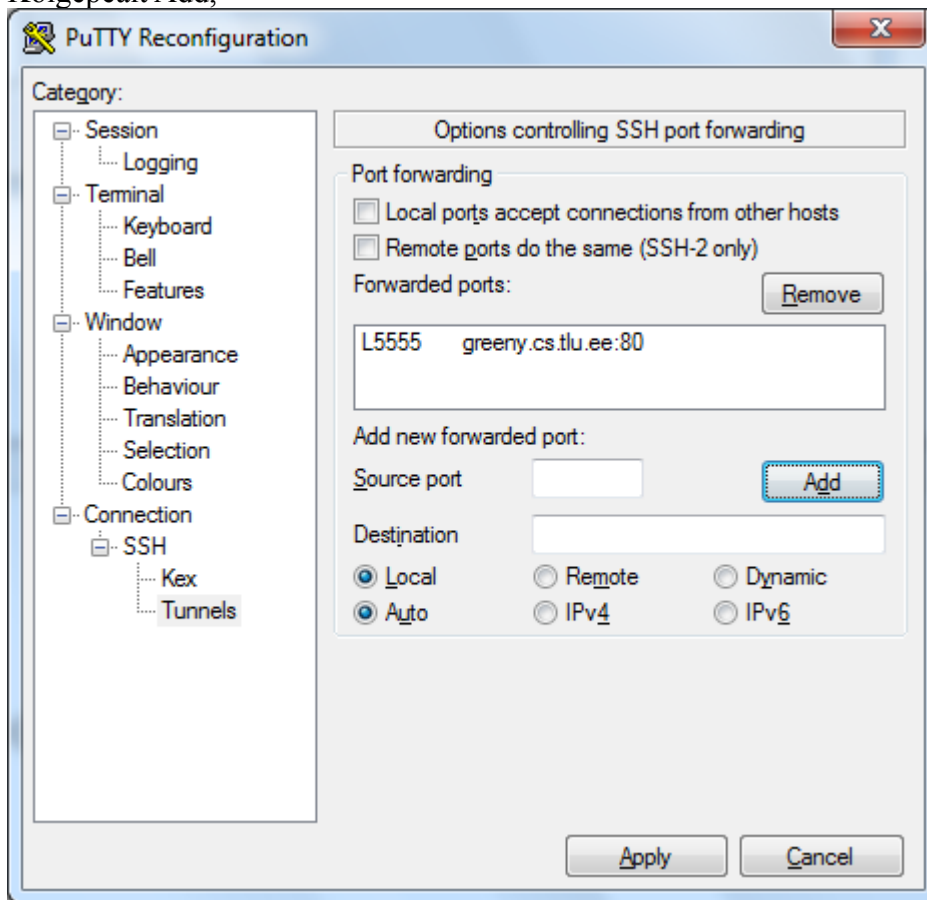


Connection -> SSH -> Tunnels



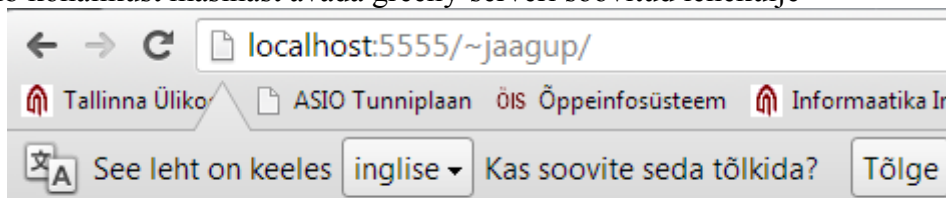
Suunan kohaliku pordi (nt. 5555) greeny.cs.tlu.ee:80 peale

Kõigepealt Add,



siis Apply

Brauseris võib kohalikest masinast avada greeny-serveri soovitud lehekülje



Index of /~jaagup

Name	Last modified	Size	Description
Parent Directory		-	
2011/	21-Nov-2011 19:47	-	
2012/	03-Sep-2012 15:57	-	
2013/	05-Apr-2013 12:39	-	